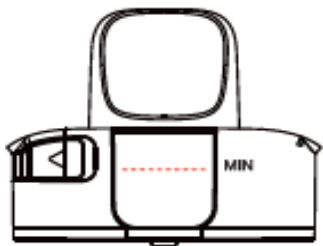
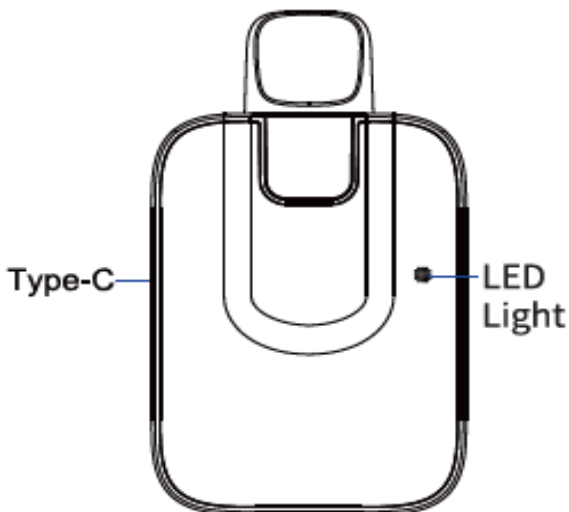


Smokefree Somerset

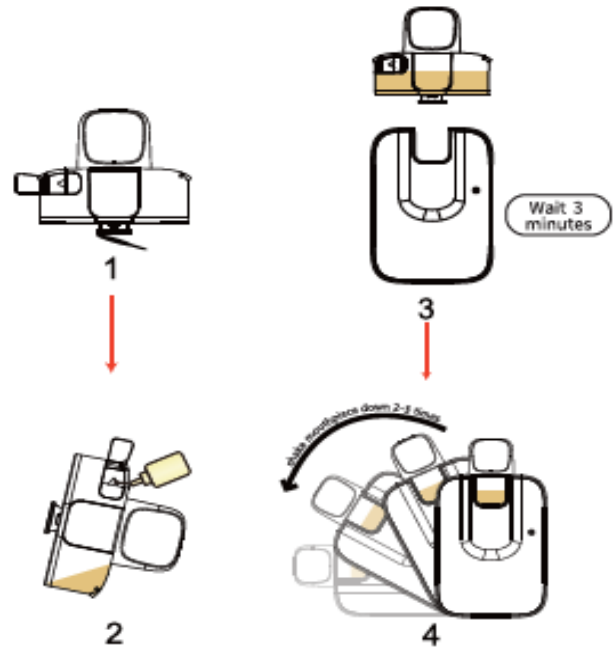
Slibox– How to use

NAME: SLIBOX
Dimension: 79x45x9.6mm
Battery: 500mAh
Capacity: 2mL
Resistance: 0.8Ω
Constant Volts: 3.6V



LED Light

When vaping, LED light is on.
When charging, LED light is on;
when fully charged, the LED light is off;
when unplug your charger, the LED flashes 3 times



1. Peel off the sticker on the bottom of the pod and open the plastic plug
2. Insert the e-liquid bottle with the mouth-piece facing downward at a 45 degree angle.
3. Install the pod and wait 3 minutes the e-liquid to soak into the coil.
4. Shake the mouthpiece downward 2-3 times before use.

The device is now ready to be used to vape.

ATTENTION

1. When the e-liquid level is lower than the minimum line, please re-fill the device with
2. e-fluid, following the 4 stage process above.
3. If the e-liquid becomes condensed, take out the pod and shake downwards 2-3 times.
4. If Condensed liquid remains at the groove of the battery, wipe it clean with a dry tissue

This leaflet is intended as a basic user guide.
Please consult the manufacturer's user manual
supplied with the device for hazard warnings.